

Application

With a maximum withdrawal force of 15 to 50 tonnes (33,700 to 112,000 lbf), these extremely powerful, self-centring pullers are ideal for extracting large bearings and other machinery components. Due to the equally distributed withdrawal force, required force is kept to a minimum and the risk for damaging shaft or bearing considerably reduced.

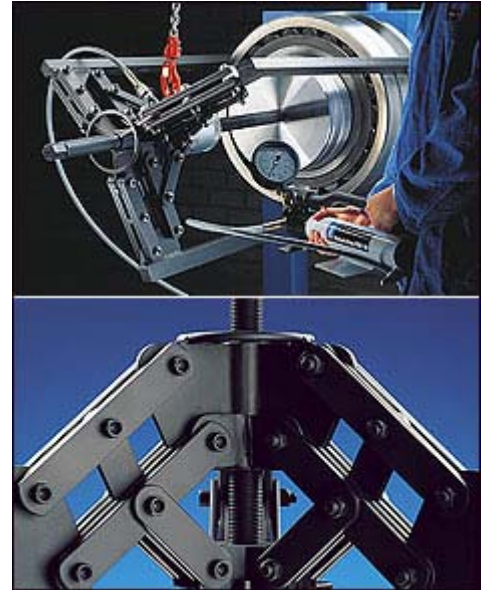
Description

TMHP 15/30/50 is the heavy duty version of the TMMP 6/10/15 pullers. They are all equipped with a hydraulic jack for effortless dismounting. The usable span width of the pullers is 195 to 506 mm (7.7 to 19.9 in) and three different arm lengths are available.

No presetting of the span width is required. The puller will open fully when the boss holding the arms is pushed forward, and close to grip the bearing when the boss is pulled back. This makes the pullers fast and practical tools to work with. TMHP pullers are supplied as standard with the SKF hydraulic pump TMJL 100 (see separate article) but are also available without pump (simply add X to the designation). An oil having a viscosity of 300 mm²/s (1.400 SUS) at operating temperature should be used, e.g. SKF Mounting Fluid LHM 300 (included with the pump). To improve the handling of these heavy pullers, a lifting handle and eye bolt are provided.

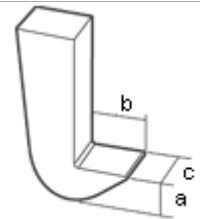
Note

Maximum working pressure of the puller is 80 MPa (11,600 psi).



Technical data										
Designation	No. of arms	Width of grip (D)		Effective arm length (L)		Maximum withdrawal force		Weight		
		mm	inch	mm	inch	kN	lbf	kg	lb	
TMHP 15/260	3	195 - 386	7.7 - 15.2	264	10.4	150	33,700	34	75	
TMHP 30/170	3	290 - 500	11.4 - 19.7	170	6.7	300	67,400	45	99	
TMHP 30/350	3	290 - 500	11.4 - 19.7	350	13.7	300	67,400	47	104	
TMHP 30/600	3	290 - 500	11.4 - 19.7	600	23.6	300	67,400	56	123	
TMHP 50/140	3	310 - 506	12.2 - 19.9	140	5.5	500	11,000	47	104	
TMHP 50/320	3	310 - 506	12.2 - 19.9	320	12.6	500	11,000	54	119	
TMHP 50/570	3	310 - 506	12.2 - 19.9	570	22.4	500	11,000	56	123	

Designation	Claw height (a)		Claw length (b)		Claw width (c)		Spindle hexagon head (AF)
	mm	inch	mm	inch	mm	inch	
TMHP 15/..	30	1.2	37	1.5	12	0.5	22
TMHP 30/..	35	1.4	30	1.2	24	1.0	28
TMHP 50/..	40	1.6	32	1.2	24	1.0	30



Part Identification						
No.	Designation	Description	TMHP 15	TMHP 30	TMHP 50	
1	TMHP...-1	Arm length	264 mm	170 mm	140 mm	
2	TMHP...-2	Arm length	344 mm	350 mm	320 mm	
3	TMHP...-3	Arm length	439 mm	600 mm	570 mm	
4	TMHP...-4	Arm length	689 mm	-	-	
5	TMHP...-5	Spindle with centre nib	-	-	-	
	TMHP...-11	Repair kit for hydraulic cylinder	-	-	-	

