

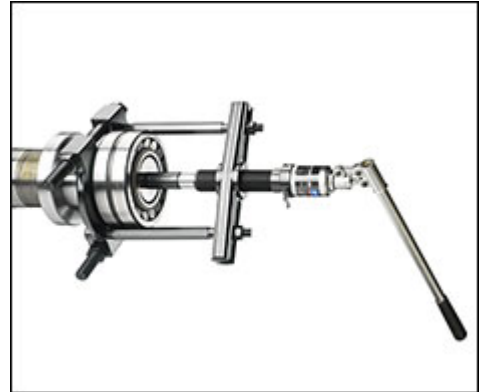
Strong back pullers TMBS 50E, TMBS 100E, TMBS 150E

Application

The strong back pullers grip behind bearings where puller jaws cannot enter. They also make it possible to engage the inner ring of the bearing, thus making sure that no withdrawal force is transmitted through the rolling elements, which minimises the risk of bearing damage and reducing required dismounting force significantly. This type of puller comes in three different designs with a maximum shaft diameter of respectively 50, 100 and 150 mm (2 in, 4 in and 6 in).

Description

The TMBS E series consists of one mechanical strong back puller kit TMBS 50E and two hydraulic strong back puller kits TMBS 100E and TMBS 150E. The TMBS 50E uses a mechanical spindle for force generation while the TMBS 100E and TMBS 150E use a hydraulic spindle. The maximum reach of the TMBS 50 is 110 mm (4.3 in). With extension rods the maximum reach of the TMBS 100E and TMBS 150E amounts to 825 mm (32.5 in). The TMBS 100E and TMBS 150E are supplied as complete kits including separator set, hydraulic spindle, beam and extension pieces.



Technical data			
Designation	TMBS 50E	TMBS 100E	TMBS 150E
Description	Mechanical strong back puller	Advanced hydraulic strong back puller	Advanced hydraulic strong back puller
Contents	1 x separator set 1 x mechanical spindle 1 x beam 2 x main rods	1 x separator set 2 x main rods 2 x extension rods, 125 mm (4.9 in) 4 x extension rods, 285 mm (11.2 in) 1 x beam 1 x hydraulic spindle TMBS 100 2 x extension pieces for hydraulic spindle; 50, 100 mm (2.0, 3.9 in) 1 x nosepiece with centre point for hydraulic spindle	1 x separator set 2 x main rods 2 x extension rods, 125 mm (4.9 in) 4 x extension rods, 285 mm (11.2 in) 1 x beam 1 x hydraulic spindle TMBS 100 2 x extension pieces for hydraulic spindle; 50, 100 mm (2.0, 3.9 in) 1 x nosepiece with centre point for hydraulic spindle
Maximum stroke	-	80 mm (3.1 in)	80 mm (3.1 in)
Nominal working force	30 kN (3.4 US ton force)	100 kN (11.2 US ton force)	100 kN (11.2 US ton force)
Maximum reach	110 mm (4.3 in)	825 mm (32.5 in)	825 mm (32.5 in)
Shaft diameter range	7 - 50 mm (0.3 - 2 in)	20 - 100 mm (0.8 - 4 in)	35 - 150 mm (1.4 - 6 in)
Maximum torque (T)	70 Nm (50 lbf ft)	-	-
Spindle Hexagon head (AF)	19 mm (0.8 in)	-	-
Cycle life hydraulic cylinder	-	Minimum 5000 cycles up to 100 kN (11.2 US ton force) UN 1½" x 16 tpi	Minimum 5000 cycles up to 100 kN (11.2 US ton force) UN 1½" x 16 tpi
Threading hydraulic cylinder	-	-	-
Safety valve setting hydraulic cylinder	-	105 kN (11.8 US ton force)	105 kN (11.8 US ton force)
Weight	1,8 kg (4 lb)	13,5 kg (29.8 lb)	17 kg (37.5 lb)
Carrying case dimensions	295 x 190 x 55 mm (11.6 x 7.5 x 2 in)	580 x 410 x 70 mm (23 x 16 x 2.8 in)	580 x 410 x 70 mm (23 x 16 x 2.8 in)



TMBS 50E



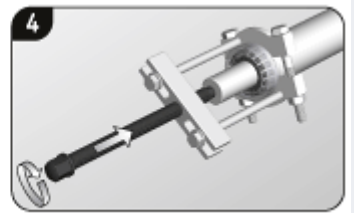
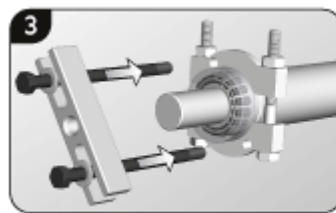
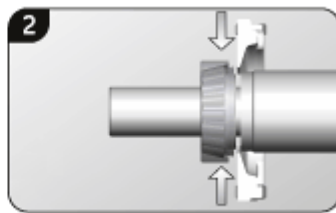
TMBS 100E



TMBS 150E

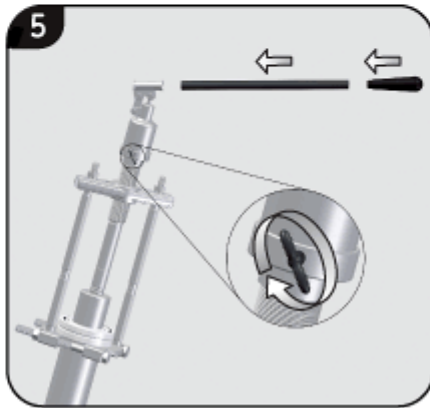
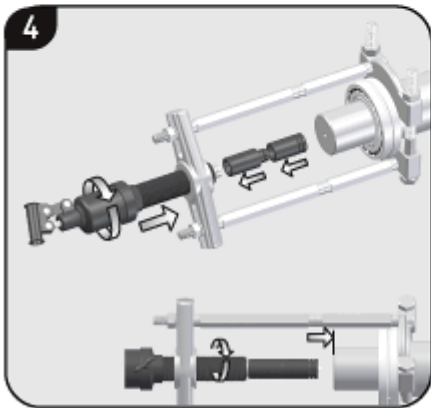
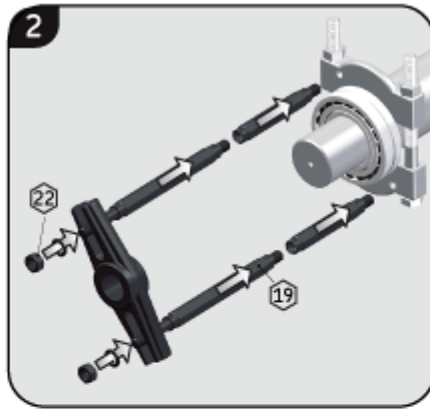
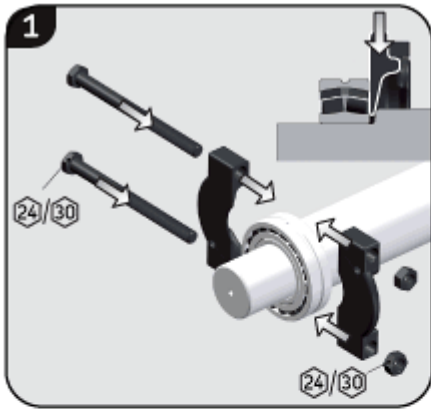
Operating instructions TMBS 50E

1. Assemble the separators behind the component to be dismantled.
2. When necessary, tighten the two together to remove component from abutment (concave sides towards component). For best performance puller should engage inner ring (i.e. flat side to face bearing).
3. Connect the main rods, beam and spindle. Centre the assembly.
4. Start extracting by turning the spindle.



Operating instructions TMBS 100E, TMBS 150E

1. Retract the piston of the TMBS 100 spindle by releasing the valve.
2. Place the Strong back behind the bearing and tighten bolts until you engage the inner ring.
3. Insert the proper main rods and if needed the extension rods
4. Select the most proper extension pieces, assemble the nose piece and screw in the complete hydraulic spindle into the beam until you reach the end of the shaft.
5. Close the safety valve and insert the handle bar with handle grip.
6. Start pumping in order to generate dismantling force. In case the stroke is not sufficient repeat steps 1, 3, 4, 5 and 6 until the part is fully disassembled.

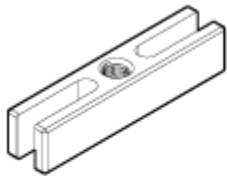


Part identification TMBS 50E

Mechanical strong back puller

Beam
Spindle
Main rods, washers (4 pcs), bolts and nuts (2 pcs)

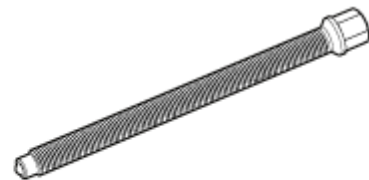
TMBS 50E
TMBS 50E-1
TMBS 50E-2
TMBS 50E-1K



TMBS 50E-1



TMBS 50E-1K



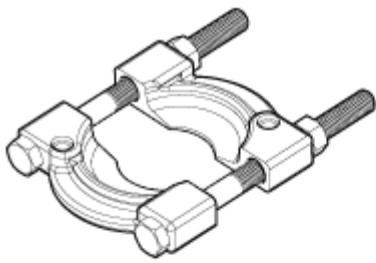
TMBS 50E-2

Part identification TMBS 100E / TMBS 150E

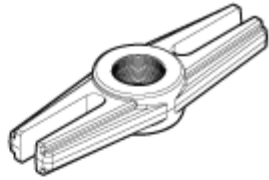
Advanced hydraulic strong back puller

Advanced hydraulic spindle, 100 kN
Set of extension pieces for the hydraulic spindle, nose piece
Beam
Main rods, nuts, washers (set)
Extension rods 125 mm/4.9 in (2pcs)
Extension rods 285 mm/11.2 in (4pcs)
Separator (complete)

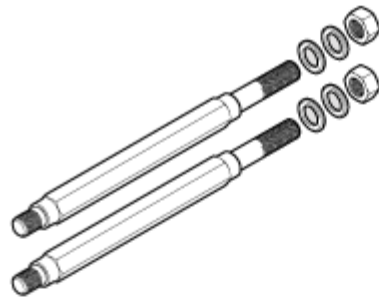
TMBS 100E	TMBS 150E
TMHS 100	TMHS 100
TMHS 8T	TMHS 8T
TMBS 100E-1	TMBS 150E-1
TMBS 100E-2	TMBS 100E-2
TMBS 100E-3	TMBS 100E-3
TMBS 100E-4	TMBS 100E-4
TMBS 100E-5	TMBS 150E-5



TMBS 100E-5



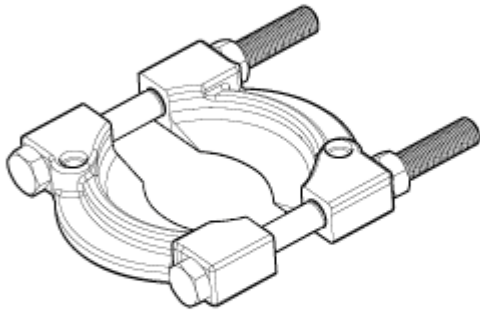
TMBS 100E-1



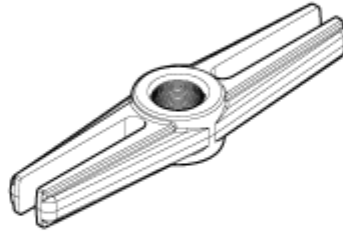
TMBS 100E-2



TMBS 100E-3



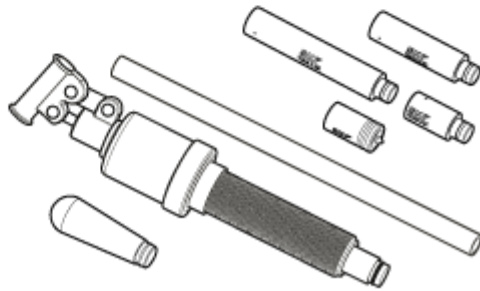
TMBS 150E-5



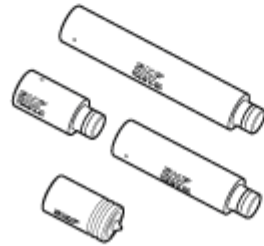
TMBS 150E-1



TMBS 100E-4



TMHS 100



TMHS 8T

TMBS 50E

TMBS 100E /
TMBS 150E

