

The best single-point automatic lubricator just got better ...

More reliable and easier to use SYSTEM 24®

Poor lubrication can considerably reduce the service life of the best of bearings. With that in mind, SKF® has enhanced the performance of the single-point automatic lubricator: SYSTEM 24. The lubricator's increased reliability and ease-of-use are a result of the following:

Product enhancements

Increased reliability at high temperatures as a result of:

- Transparent lubricant container made of polyamide reduces gas diffusion
- The larger molecules of the driving inert gas are less sensitive to higher temperatures

Intrinsically safe approval for Zone 0:

- Tested and approved for use in areas where an explosive atmosphere caused by gases, vapours and dust, is continuously present as well as for use in mines and underground areas

Easy-to-remove end-cap:

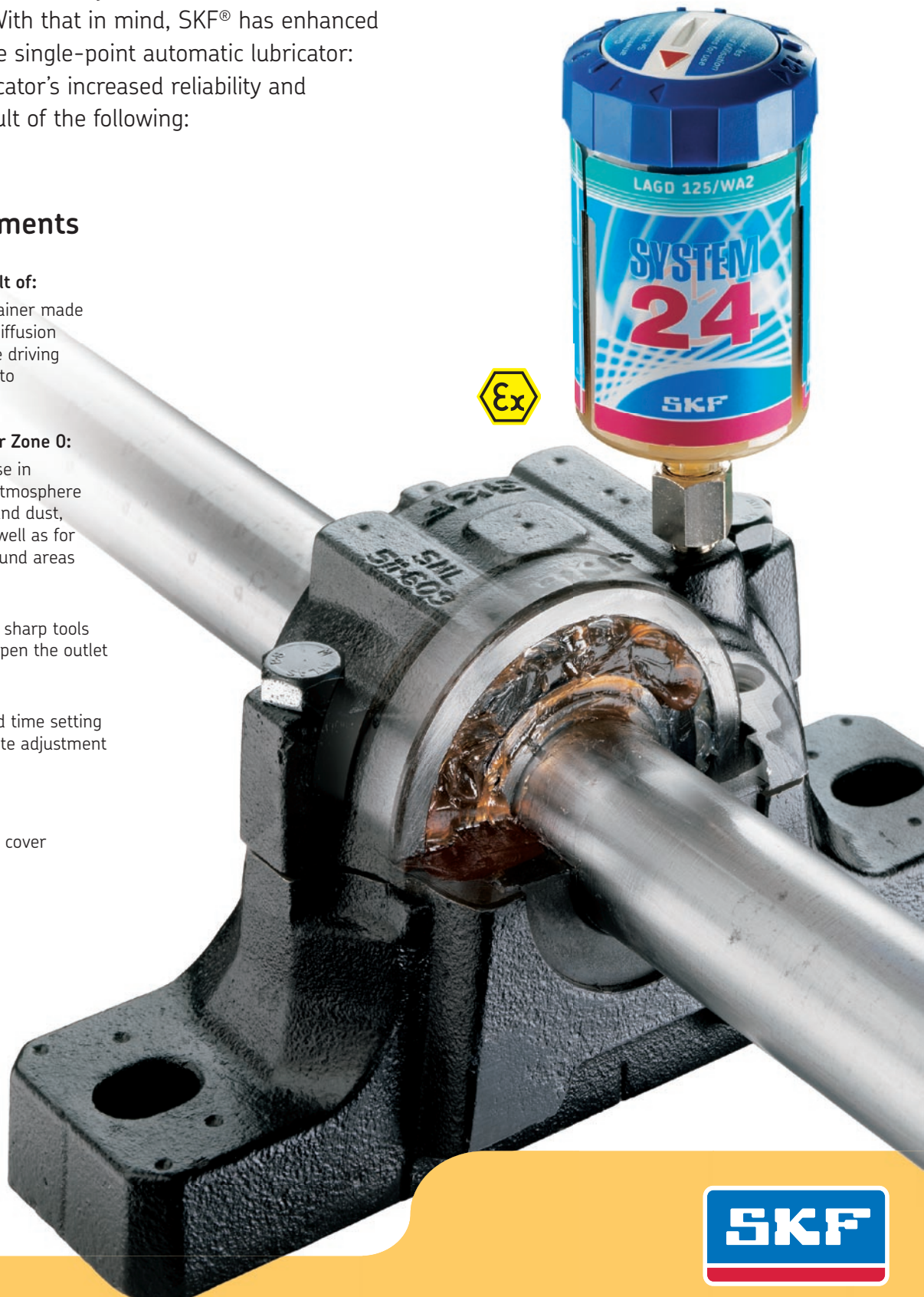
- Covers the lubricant outlet; sharp tools are no longer required to open the outlet

Easy installation:

- The tool-free activation and time setting slot allows easy and accurate adjustment of lubrication flow

Easy and quick fitting:

- Facilitated by easy-grip top cover

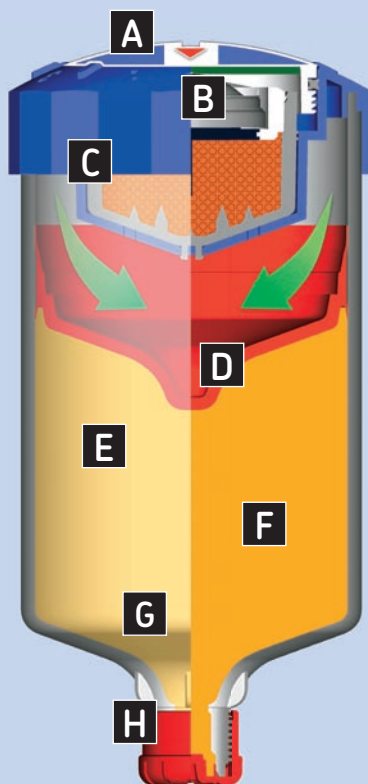


SKF single point automatic lubricators LAGD 125 and LAGD 60

While enhancing the reliability and ease-of-use, SYSTEM 24 still offers you the features and benefits you have to come to expect from SKF automatic lubricators.

Existing features

- Flexible time setting period ranging between 1 and 12 months
- High reliability and dispense rate accuracy allow fit and forget procedure until predetermined replacement date
- Transparent lubricant container allows visual inspection of dispense rate
- High capacity, compact size permits installation in restricted areas
- Redesigned non-return valve of the oil-filled SYSTEM 24 is less sensitive to vibration, minimising the risk of leakage
- Available filled with various high quality SKF greases and oils, which are especially developed for a wide range of bearing applications
- Dispense rate setting is a simple part of the installation process
- Hermetic sealing prevents ingress of dirt or foreign matter
- Allows low grease dispense rate
- Available in two sizes: 125 ml (LAGD 125) and 60 ml (LAGD 60)
- Can be temporarily deactivated
- Wide range of accessories is available



A Tool-free activation and time setting slot

Allows easy installation and accurate adjustment of lubrication flow

B Gas cell

Produces a large molecule inert gas, which is less temperature sensitive

C Easy-grip top-cover

Facilitates easy and quick fitting

D Special piston shape

Helps ensure optimum emptying of lubricator

E Transparent container made of polyamide

Reduces gas diffusion and increases reliability

F High quality SKF bearing grease

SKF bearing greases, especially developed for bearing applications

G One-piece lubricant container with an integrated base

Offers better vibration resistance

H Removable lubricant outlet end-cap

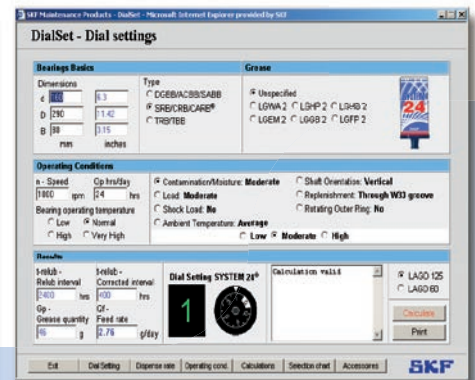
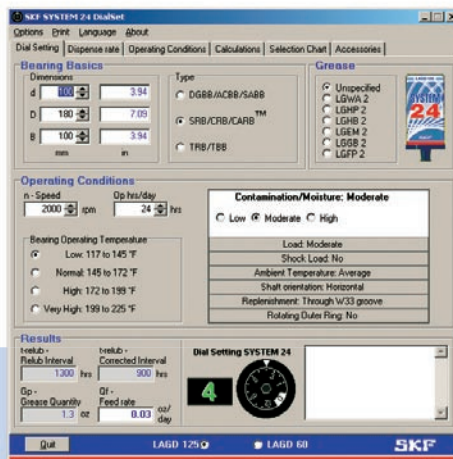
No sharp tool is required to open the outlet

Re-lubrication calculation program DialSet 3.0

Accurate calculation of re-lubrication intervals

DialSet is a calculation program, which easily calculates the correct re-lubrication intervals settings. After selecting the criteria and grease relevant to your application, the program provides you with the correct settings for your SKF automatic lubricators. Additionally, it recommends when to use LAGD 60, LAGD 125 (SYSTEM 24) or LAGD 400 (SYSTEM MultiPoint).

- Selecting the operating conditions of your application, vertical shaft, outer ring rotation and shock loads, allows accurate calculation of the re-lubrication intervals
- Calculations are based on the latest SKF lubrication theories published in the 2003 SKF general catalogue (publ. nr. 5000)
- Calculated lubrication interval depends on the properties of the selected grease, minimising the risk of under or over-lubrication and optimising grease consumption
- Calculations are based on SYSTEM 24 and SYSTEM MultiPoint grease dispense rates, allowing the recommendation of the correct automatic lubricator for your application
- Recommended grease quantity depends on the grease replenishment position; side or W33 for optimum grease consumption
- Includes a complete list of SYSTEM 24 accessories



DialSet 3.0 for PDA/PPC

If you own a PDA or a PPC, you can now calculate the correct re-lubrication intervals on-site. From www.mapro.skf.com you can now download, free-of-charge, the PDA/PPC version of SKF's re-lubrication calculation program DialSet 3.0 in English language.

DialSet 3.0 on CD-ROM

DialSet 3.0 is available on CD-ROM with calculation in six languages: English, French, German, Italian, Spanish and Swedish. The program is suitable for PC's working with MS Windows 98 or later and can be ordered from SKF under designation MP3506.

DialSet 3.0 online

In addition to the downloadable PDA/PPC and the CD-ROM versions, SKF also offers you DialSet 3.0 online in English language. The program is accessible free-of-charge from www.mapro.skf.com. After filling in your application's conditions, calculations are made online and the program provides you with a printable re-lubrication interval recommendation.

Ordering details

Designation	Description
LAGD 125/WA2	125 ml (4.25 fl oz. US) unit filled with LGWA 2 grease (multi-purpose EP type)
LAGD 60/WA2	60 ml (2.03 fl oz. US) unit filled with LGWA 2 grease (multi-purpose EP type)
LAGD 125/EM2	125 ml (4.25 fl oz. US) unit filled with LGEM 2 grease (high loads, slow rotations)
LAGD 125/FP2	125 ml (4.25 fl oz. US) unit filled with LGFP 2 grease (food processing industry)
LAGD 125/GB2	125 ml (4.25 fl oz. US) unit filled with LGGB 2 grease (biodegradable, low toxicity)
LAGD 125/HB2	125 ml (4.25 fl oz. US) unit filled with LGHB 2 grease (high temperature, loads, plain bearing)
LAGD 125/HP2	125 ml (4.25 fl oz. US) unit filled with LGHP 2 grease (high performance polyurea)
LAGD 125/HFP15*	125 ml (4.25 fl oz. US) unit filled with HFP150 oil (food processing, viscosity ISO 150)
LAGD 125/HHT26*	125 ml (4.25 fl oz. US) unit filled with HHT265 oil (synthetic high temperature chain oil, viscosity ISO 265)
LAGD 125/HMT68*	125 ml (4.25 fl oz. US) unit filled with HMT68 oil (mineral EP type chain oil, viscosity ISO 68)
LAGD 60/HMT68*	60 ml (2.03 fl oz. US) unit filled with HMT68 (mineral EP type chain oil, viscosity ISO 68)
LAGD 125/U*	125 ml (4.25 fl oz. US) empty unit suitable for oil filling

* Includes non-return valve

Technical data

Grease capacity	LAGD 125 LAGD 60	125 ml (4.25 fl oz. US) 60 ml (2.03 fl oz. US)
Nominal emptying time	Adjustable; 1 - 12 months	
Ambient temperature range	-20 to 60 °C (-5 to 140 °F)	
Maximum operating pressure	5 bar (75 psi)	
Drive mechanism	Gas cell producing inert gas	
Connection thread	G 1/4	
Maximum feed line length with:		
- grease	300 mm (11,8 in)	
- oil	1 500 mm (59,1 in)	
Intrinsically safe approval	II 1 GD EEx ia II C T6 T85 °C I M 1 EEx ia I	
Protection class	IP 68	
Recommended storage temperature	20 °C (70 °F)	
Storage life of lubricator	2 years	
Weight	LAGD 125 approx 200 g (7,1 oz) LAGD 60 approx 130 g (4,6 oz) Lubricant included	

Ordering details

Designation	Description	Designation	Description
LAPA 45	Angle connection 45°	LAPM 4	Manifold (4 to 1)
LAPA 90	Angle connection 90°	LAPN 1/8	Nipple G 1/4 - G 1/8
LAPB 3x4E1*	Brush 30 × 40 mm	LAPN 1/2	Nipple G 1/4 - G 1/2
LAPB 3x7E1*	Brush 30 × 70 mm	LAPN 1/4	Nipple G 1/4 - G 1/4
LAPB 3x10E1*	Brush 30 × 100 mm	LAPN 3/8	Nipple G 1/4 - G 3/8
LAPB 5-16E*	Elevator brush, 5-16 mm gap	LAPN 6	Nipple G 1/4 - M6
LAPB D2*	Brush round Ø 20 mm	LAPN 8	Nipple G 1/4 - M8 × 1,25
LAPC 50	Clamp	LAPN 8x1	Nipple G 1/4 - M8 × 1
LAPE 35	Extension 35 mm	LAPN 10	Nipple G 1/4 - M10 × 1,5
LAPE 50	Extension 50 mm	LAPN 10x1	Nipple G 1/4 - M10 × 1
LAPT 1000	Flexible tube, 1 000 mm long, 8 × 6 mm	LAPN 12	Nipple G 1/4 - M12
LAPF F1/4	Tube connection female G 1/4	LAPN 12x1.5	Nipple G 1/4 - M12 × 1,5
LAPF M1/4	Tube connection male G 1/4	LAPP 2E	Protection base
LAPF M1/8	Tube connection male G 1/8	LAPP 3E	Protection cover
LAPF M3/8	Tube connection male G 3/8	LAPV 1/4	Non return valve G 1/4
LAPG 1/4	Grease nipple G 1/4	LAPV 1/8	Non return valve G 1/8
LAPM 2	Y-connection		

* Suitable for use with oil filled SYSTEM 24 units only

SYSTEM 24® is a registered trademark of SKF USA Inc.