



Re-lubricate



SKF Product Data Sheet

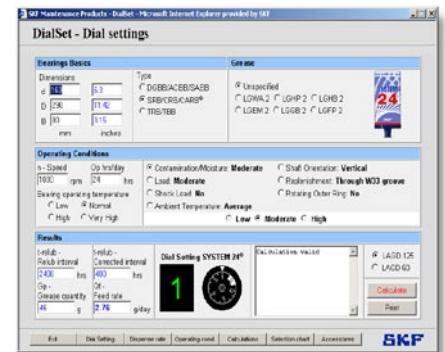
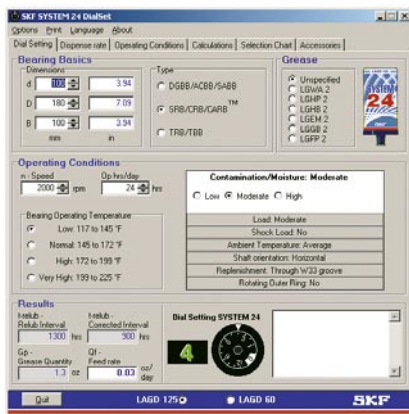
Re-lubrication Calculation Program DialSet 3.0

Accurate calculation of re-lubrication intervals

DialSet is a calculation program, which easily calculates the correct re-lubrication intervals settings.

After selecting the criteria and grease relevant to your application, the program provides you with the correct settings for your SKF automatic lubricators. Additionally, it recommends when to use LAGD 60, LAGD 125 (SYSTEM 24) or LAGD 400 (SYSTEM MultiPoint).

- Selecting the operating conditions of your application, vertical shaft, outer ring rotation and shock loads, allows accurate calculation of the re-lubrication intervals
- Calculations are based on the latest SKF lubrication theories published in the 2003 SKF General Catalogue (publ. nr. 5000)
- Calculated lubrication interval depends on the properties of the selected grease, minimising the risk of under or over-lubrication and optimising grease consumption
- Calculations are based on SYSTEM 24 and SYSTEM MultiPoint grease dispense rates, allowing the recommendation of the correct automatic lubricator for your application
- Recommended grease quantity depends on the grease replenishment position; side or W33 for optimum grease consumption
- Includes a complete list of SYSTEM 24 accessories



DialSet 3.0 on CD-ROM

DialSet 3.0 is available on CD-ROM with calculation in six languages: English, French, German, Italian, Spanish and Swedish. The program is suitable for PC's working with MS Windows 95 or later and can be ordered from SKF under designation MP3605.

DialSet 3.0 for PDA/PPC

If you own a PDA or a PPC, you can now calculate the correct re-lubrication intervals on-site. From www.mapro.skf.com you can now download, free-of-charge, the PDA/PPC version of SKF's re-lubrication calculation program DialSet 3.0 in English language.

DialSet 3.0 online

In addition to the downloadable PDA/PPC and the CD-ROM versions, SKF also offers you DialSet 3.0 online in English language. The program is accessible free-of-charge from www.mapro.skf.com. After filling in your application's conditions, calculations are made online and the program provides you with a printable re-lubrication interval recommendation.

SKF Maintenance Products

© Copyright SKF 2004/11

www.mapro.skf.com
www.skf.com/mount

In line with our policy of continuous development of our products we reserve the right to alter any part of the above specification without prior notice.

